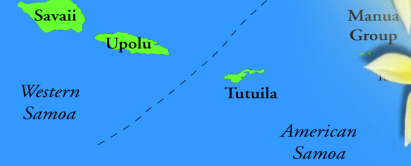


CORAL REEF ACADEMY SAMOA

Samoa Islands



info@coralreefacademy.com

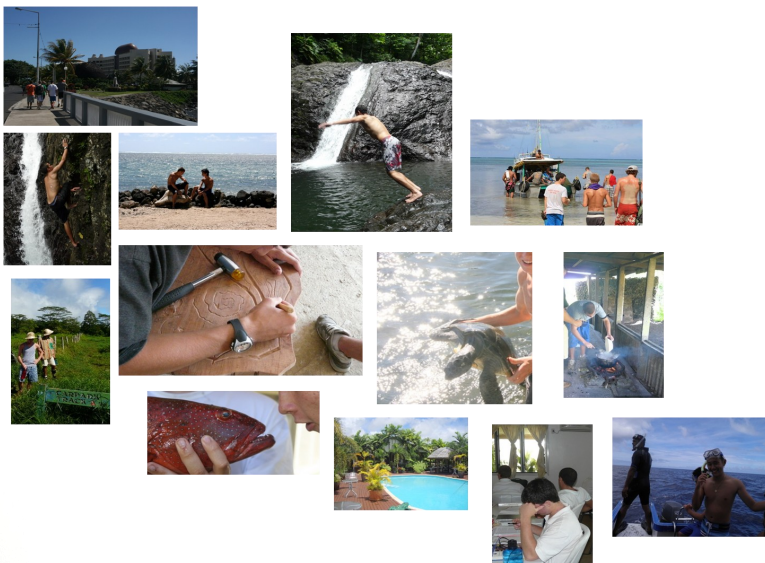
Phone: 702 233 0444

© Pacific Travel Guides

Journey into a World of Self-discovery

Located in Samoa, in the heart of the South Pacific, half way between Hawaii and New Zealand, Coral Reef Academy in Samoa offers young men an opportunity to discover themselves in a unique, therapeutic environment set in the beautiful South Pacific. Students engage in cultural experiences, volunteer activities and academic success while personally developing through individual, group and family therapies.

A multidisciplinary team of therapeutic, academic, residential and health professionals work together with you and your son to empower him to become an independent individual capable of making healthy choices for his future.



Addressing the whole picture:

A holistic approach to meeting the needs of your son.

- Therapeutic expertise
- Academic Excellence
- Cultural Immersion
- Spiritual growth
- Physical fitness
- Social Responsibility



Journey into a new Culture

Unique to Coral Reef Academy is its complete immersion in the Samoan culture. Your son will experience a culture which encompasses living and enjoying life while contributing to the family and community. Living within another culture is known to enhance development through



- Increased awareness of the world beyond themselves
- Increased levels of empathy – seeing the world through someone else's eyes
- Increased understanding of one's own culture and how decision making, values and behaviors are informed by one's culture

Samoa culture is woven throughout the program activities. Students join in cultural activities designed to enhance their therapy, their education and fun. Key ingredients of the cultural component of the program include:

Community Service

Students join in a variety of community service projects throughout their time at CRA. As a group, the students participate in regular outreach programs. Individually, they will complete a series of service projects as part of their journey to graduation.

Cultural Education

Under the leadership of the education department, students learn Samoan language, dance and cultural practices. They have family visits and weekend stays with Samoan families to fully immerse them in the culture.

Life Skills Development

Students participate in hands on learning about Samoan cooking, horticulture, fishing and basic life skills of everyday life in Samoa.

Fun

Breathtaking adventures await your son in Samoa. Imagine jumping from the top of a towering waterfall or snorkeling on the reefs of hundreds of tropical fish – these are among the many excursions students enjoy weekly.



“The Samoan culture taught me that my family and relationships are what really matter”

... a former CRA Student



About Samoa

Samoa is located in the South Pacific Ocean, about halfway between Hawaii and New Zealand and just east of the International Date Line. The country consists of 2 large islands—Savai'i to the west and Upolu to the east—and several smaller islands. It has a land area of 2,850 square kilometers (1,100 square miles) and a coastline of 403 kilometers (250 miles), making it slightly smaller than Rhode Island. The capital city, Apia is located on the north coast of Upolu.

People first settled in the Samoan islands some 3,500 years ago, from neighboring Polynesian islands. They lived in seclusion until around 1600 when missionaries came to the islands.

In the 1800s, Germany, and the U.S. began competing for control of the Samoan islands. The Tripartite Convention of 1899 resulted in the act that formally partitioned the Samoan archipelago into the western islands as a German colony and the Eastern islands (American Samoa) as a United States territory. In 1920, Germany lost control of the western islands to New Zealand when it became a League of Nation Mandate, until 1962, when it became the first Pacific island to gain independence. Previous names were German Samoa from 1900 to 1919, and Western Samoa from 1914 to 1997. In 1997, Western Samoa changed its name to Samoa and is now officially known as the Independent State of Samoa.

Journey through Self Awareness

Licensed professional therapists offer a variety of therapeutic activities designed to meet the individual needs of the students at CRA. Through individual, group and family therapy, your son will have the opportunity to understand the problems which have led him to Samoa. He will gain the tools required to address these problems effectively and be empowered to take ownership of his future.

The Program

The therapy offered at CRA is one piece of a holistic program designed to develop your son in all areas of his life. Success in the program is measured through the student's individual progress which includes personal goals in all areas of development. As a part of this approach, the following therapy activities are offered

Individual Therapy

Students meet weekly with their primary therapist for individual sessions. Individualized treatment plans are designed to meet the unique needs of each CRA student.

Group Therapy

A variety of group therapy approaches are incorporated into the CRA treatment plan. Students participate in general therapy groups, peer run feedback groups, community groups and addictions groups.

Family Therapy

Weekly family sessions take place over internet-based video phones. Student's primary therapist guides each family through identified therapeutic goals. On-site family visits allow the opportunity for families to put therapeutic progress into practice with the guidance of the primary therapist.

Addictions Therapy

Upon arrival, each student undergoes a complete substance abuse assessment so that we can tailor the addictions work to his needs. Cognitive and Dialectical Behavioral therapies are used in combination with the 12 Step Model for a multimodal approach to treatment.



Karen Nelson, Ph.D. Clinical Director

Karen is a licensed psychologist in the state of Texas. She has over 15 years of clinical experience including work with dual diagnosis, learning disabilities and group therapy.

Julie C. Elliott, LCW, LMFT, CART Program Therapist

Julie is licensed in the state of Texas and has over 10 years of experience in working with adolescents in residential treatment, six years in Samoa. She specializes in family therapy and addictions treatment

Filifilia Fauo'o Su'a Registered Nurse

Filifilia is a registered nurse with over 20 years of experience working in Samoa, New Zealand and Australia. Ms. Su'a works closely with local physicians and hospitals to ensure the highest levels of health care are available to students of CRA.



Journey through Education

Coral Reef Academy offers a variety of educational options to best fit the needs of your son. Our programs offer high school and college level classes from accredited programs in the United States. Students engage in 26 hours of structured school hours across a 5-day school week.

Park City Program

Park City Program is our core educational program, fully accredited by the Northwest Association of Accredited Schools. In addition to a wide range of courses offered and a year round online High School program, Park City offers credits for all Samoan Language and cultural courses completed in Samoa by our residents. Students attending PCI have the same benefits of attending and completing courses at a public school with the added benefit of attending a virtual campus from the convenience of their home and at their own pace, time and schedule.

BYU Independent Study Program

BYU offers a distant education program that offers over 600 University, High School and Personal Enrichment courses to people all throughout the world. Courses can be taken through a paper/pencil version or online. The student reads the materials, submits their lessons, takes a final exam with a proctor or at a testing center and finally receives a course grade that can be transferred to a school of their choice.

In addition to the Independent study programs, students are supported through the following resources:

- Individual tutoring is available for all subjects. Academic staff along with community educational partners are available to assist student with their individual academic needs
- School field trips are an important part of the CRA experience. Visits to government ministries, career fairs at local universities as well as visits to research centers and cultural activities are all part of the well rounded educational curriculum.
- A fully equipped computer lab is available with internet capabilities for students utilizing online educational programs.



The Education Team



Moana Jonas Program Teacher

After completing her education in New Zealand, Moana has been teaching in various settings in New Zealand and Samoa for over 10 years. Her experience includes work with students with special learning needs and disabilities.

Faumui Harry Carter Cultural Immersion Coordinator

As a Matai, or village chief for his family for over 25 years, Faumui not only teaches, but models the cultural heritage and experiences Samoa has to offer. His personal as well as educational knowledge of the Samoan history, culture and language offer students the opportunity to experience Samoa from many perspectives as they learn, live and work within the Samoan community.

Motoi Mootoi Sports Coordinator

With a focus on ensuring the students have a safe and enjoyable environment to enhance their health and fitness levels, Motoi works to teach students the value of a healthy and active lifestyle. He works closely with each student to identify individual fitness goals and opportunities.

With ample knowledge of the US educational system, our teachers are equipped to assist families and students select the perfect independent study program that suit each individual. We commit to providing a service that contributes to a successful learning experience for your son.

Journey for One's Mind and Body

Spiritual growth and self-awareness as well as physical fitness are important elements of the Coral Reef Academy holistic program approach. A number of program options are in place to meet the individual needs of our students in these areas.

Spiritual Growth and Exploration

CRA has been home to all religions and belief systems. We respect and encourage this diversity in our community and have found it to enhance the learning of our students. Our program does not define what students should believe in, but hopes to encourage students to strengthen their belief system so it better supports their healing process.

Samoa is defined as a Christian country, and as so, church is an important part of many Samoan people. Students who wish to participate in a local non-denominational church service have the option to attend weekly Sunday services. In addition to attending this church home-base, students have the opportunity to explore other churches one week each month with a tour of churches throughout the year.

Student wishing for another alternative are given opportunities to lead Spiritual Exploration Seminars, where they share with others their thoughts, beliefs and questions. Community educators are also included as speakers for these seminars.

Physical Education

Contact hours with students for physical education each week is 5 hrs minimum. For those who would prefer to have more physical education hours they can also use their free times to work out or play sports. Students also have opportunities to participate in local sports tournaments and sports days.

